

Ambient Air Concentrations Quarterly Update
Third Quarter 2023 (July – September 2023)

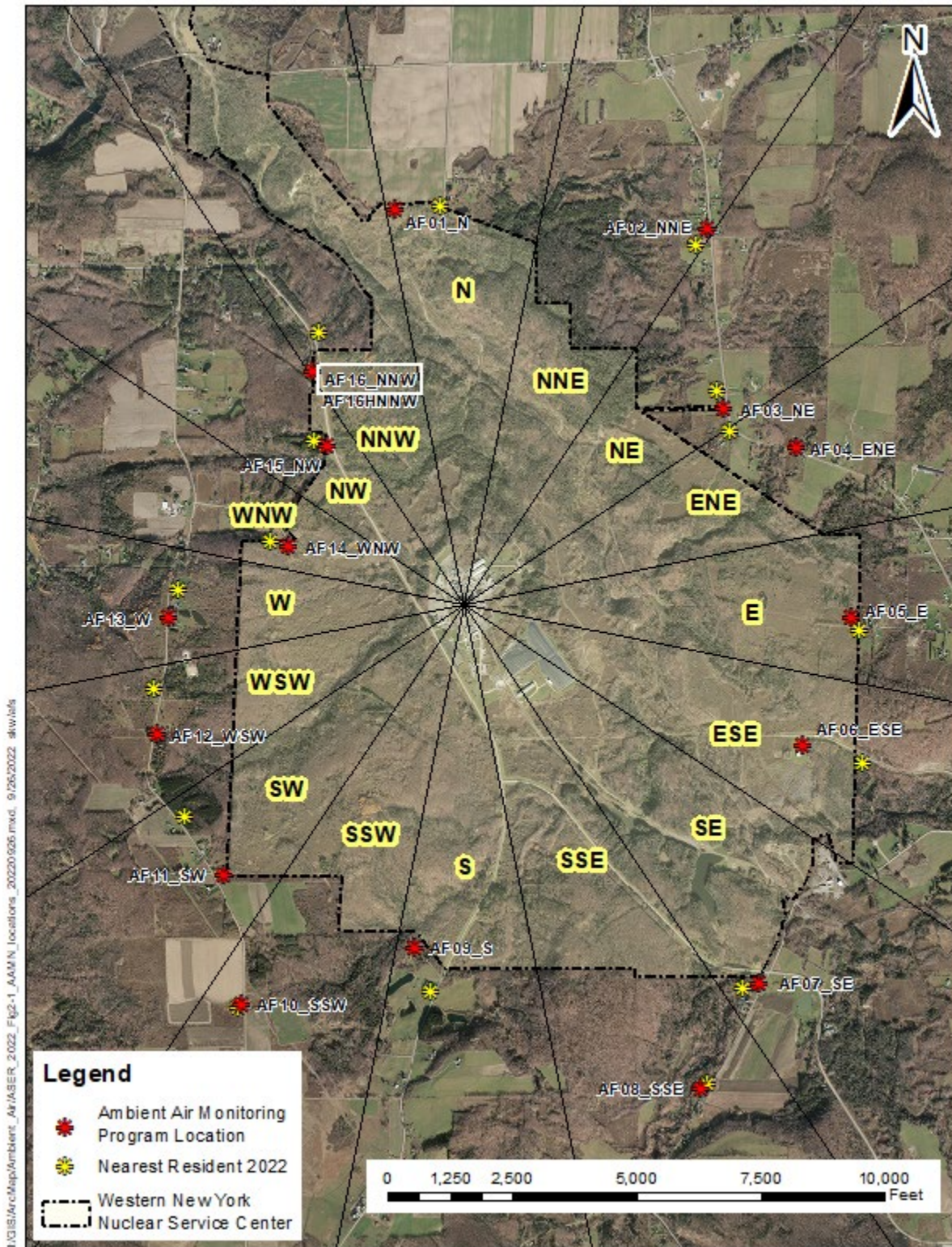
(The historical trend data includes the previous 6 years - 2017 to 2022.)

Notes:

- 1) The sampling location is indicated at **AF16_NNW** (north northwest), as shown in Map 1 below, and is approximately one-mile northwest of the center of the West Valley Demonstration Project site. The historically predominant prevailing wind direction at the WVDP is toward NNW, and this direction represents the most conservative dose estimate from cumulative ambient air exposure.
- 2) The EPA National Emission Standards for Hazardous Air Pollutants (NESHAP) Compliance Limit is 10 mrem/year. In the 'NESHAP 10 mrem/year Limit' column, the concentration in air (in $\mu\text{Ci/mL}$) for each isotope that would result in a dose equivalent of 10 mrem/year if sustained for a full year is shown.
- 3) Negative results in the data tables represent sampling results with zero activity present or where the instrument background slightly exceeds the instrument radioactivity count rate obtained for the sample.

The concentrations of radioisotopes at this location continue to be well below the compliance limit through 3Q 2023; No positive measurements were observed in this quarter at AF16_NNW. Among all other compass sector monitoring locations, one very low positive detection of Cs-137 at AF14_WNW (west-northwest) was observed this quarter. The dose (mrem) calculated *per sector* from this quarterly detection was 0.03% of the NESHAP annual dose (mrem) limit.

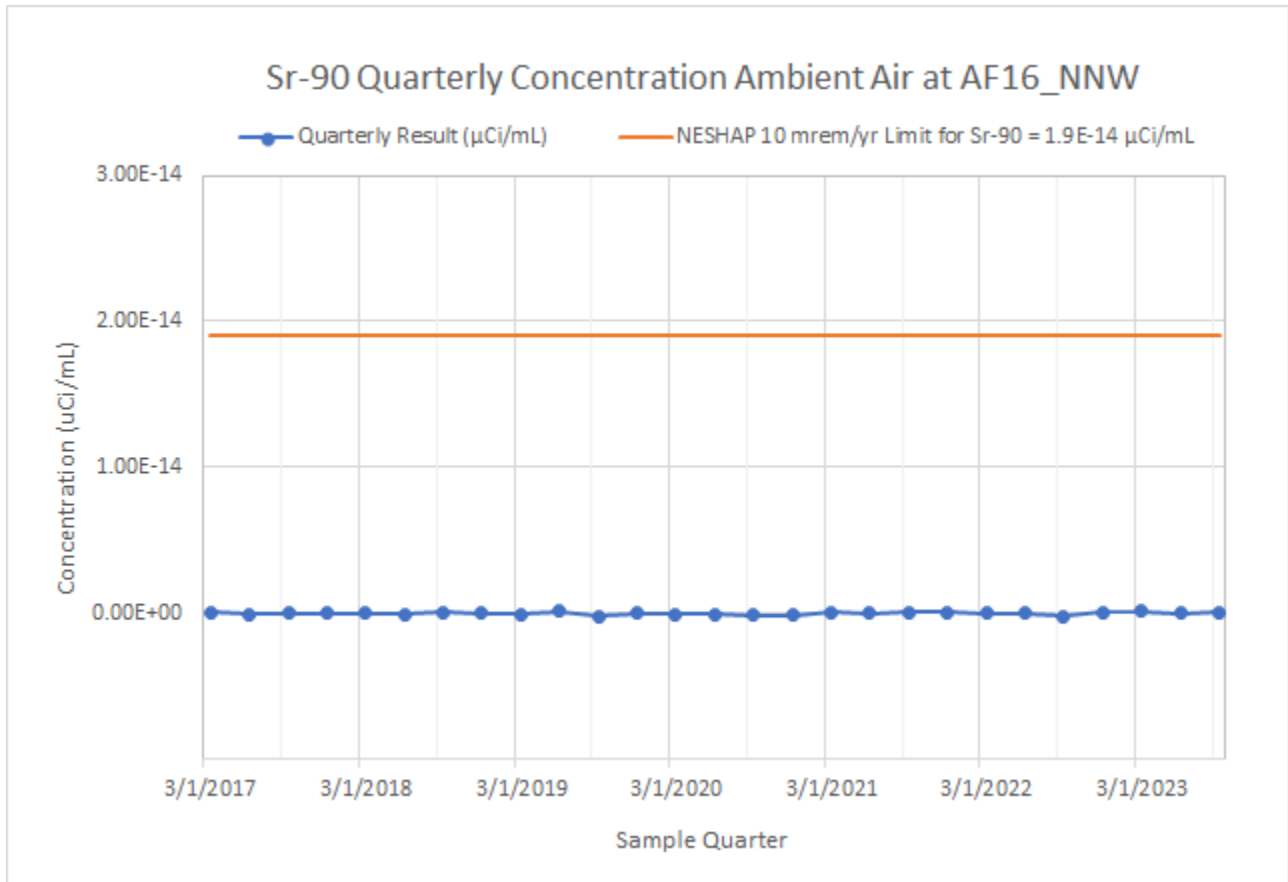
Map 1



J:\GIS\ArcMap\Ambient_Air\ASER_2022_Fig1_AAMN_locations_20220926.mxd, 9/26/2022, shw/bfs

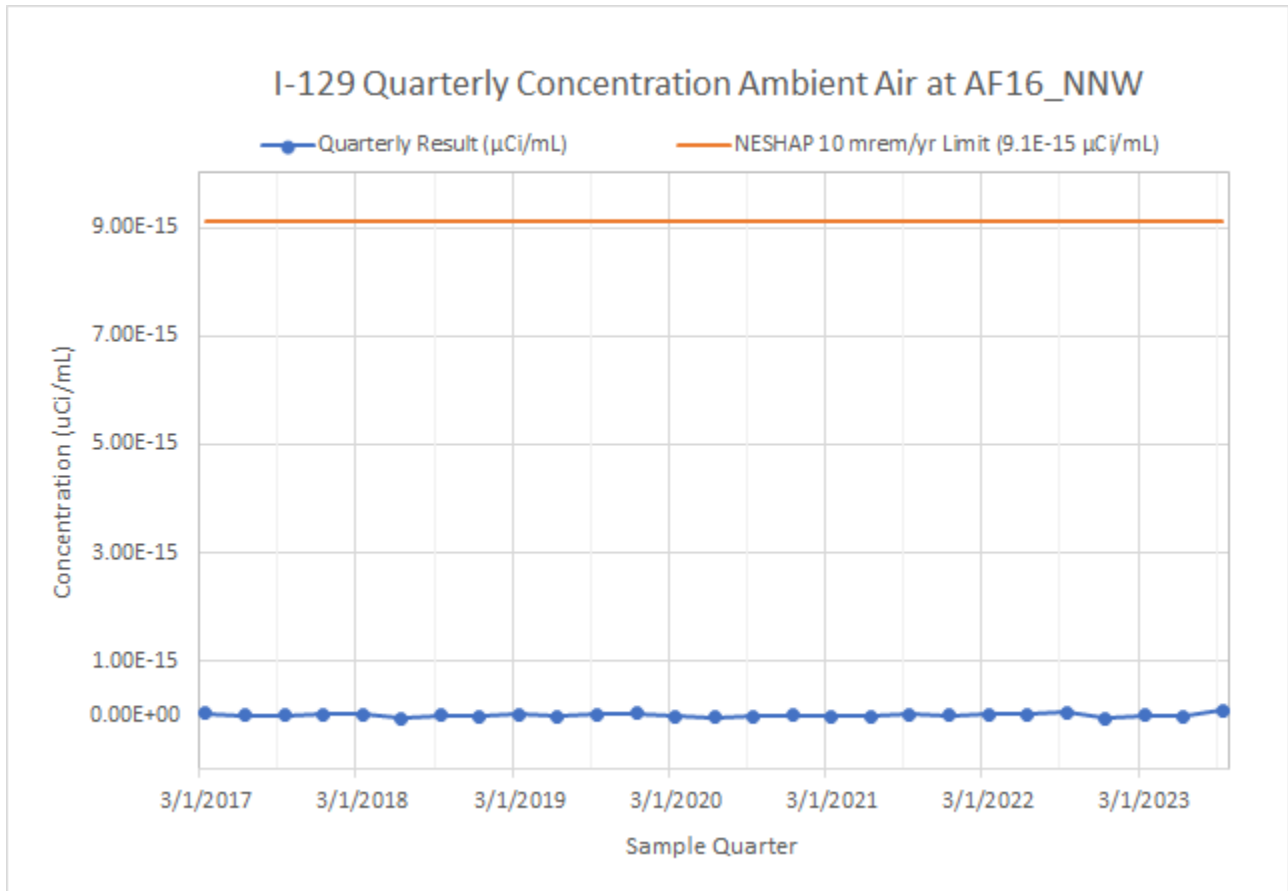
1. strontium-90 (Sr-90)

Location	Sample ID	Sample Date	Quarterly Result (μCi/mL)	Quarterly Uncertainty (μCi/mL)	NESHAP 10 mrem/yr Limit for Sr-90 = 1.9E-14 μCi/mL	Concentration (%) of NESHAP Limit
AF16_NNW	2017-00125	3/28/2017	6.58E-17	9.28E-17	1.9E-14	0.35%
AF16_NNW	2017-02597	6/20/2017	-7.63E-17	1.03E-16	1.9E-14	-0.40%
AF16_NNW	2017-04074	9/26/2017	-9.84E-18	9.42E-17	1.9E-14	-0.05%
AF16_NNW	2017-05992	12/19/2017	2.64E-17	5.16E-17	1.9E-14	0.14%
AF16_NNW	2018-00075	3/27/2018	2.77E-17	1.08E-16	1.9E-14	0.15%
AF16_NNW	2018-02591	6/19/2018	-8.08E-17	1.10E-16	1.9E-14	-0.43%
AF16_NNW	2018-03821	9/25/2018	9.93E-17	1.13E-16	1.9E-14	0.52%
AF16_NNW	2018-05930	12/18/2018	7.82E-18	8.88E-17	1.9E-14	0.04%
AF16_NNW	2019-00118	3/26/2019	-2.83E-17	9.31E-17	1.9E-14	-0.15%
AF16_NNW	2019-02458	6/18/2019	1.37E-16	1.61E-16	1.9E-14	0.72%
AF16_NNW	2019-04141	9/24/2019	-1.82E-16	1.35E-16	1.9E-14	-0.96%
AF16_NNW	2019-06029	12/17/2019	2.32E-17	1.30E-16	1.9E-14	0.12%
AF16_NNW	2020-00572	3/24/2020	-4.24E-17	6.68E-17	1.9E-14	-0.22%
AF16_NNW	2020-02347	6/16/2020	-2.31E-17	1.34E-16	1.9E-14	-0.12%
AF16_NNW	2020-04109	9/22/2020	-1.36E-16	1.10E-16	1.9E-14	-0.72%
AF16_NNW	2020-05758	12/15/2020	-1.03E-16	9.40E-17	1.9E-14	-0.54%
AF16_NNW	2021-00163	3/23/2021	5.93E-17	1.09E-16	1.9E-14	0.31%
AF16_NNW	2021-02606	6/15/2021	4.15E-17	1.42E-16	1.9E-14	0.22%
AF16_NNW	2021-04345	9/21/2021	1.17E-16	9.77E-17	1.9E-14	0.62%
AF16_NNW	2021-06770	12/28/2021	9.81E-17	8.93E-17	1.9E-14	0.52%
AF16_NNW	2022-00044	3/22/2022	1.10E-17	7.63E-17	1.9E-14	0.06%
AF16_NNW	2022-02606	6/28/2022	-8.81E-18	1.06E-16	1.9E-14	-0.05%
AF16_NNW	2022-05037	9/20/2022	-1.87E-16	1.15E-16	1.9E-14	-0.99%
AF16_NNW	2022-06921	12/27/2022	8.83E-17	1.21E-16	1.9E-14	0.46%
AF16_NNW	2023-00065	3/21/2023	1.23E-16	1.61E-16	1.9E-14	0.65%
AF16_NNW	2023-02579	6/27/2023	2.46E-17	1.01E-16	1.9E-14	0.13%
AF16_NNW	2023-04905	9/19/2023	9.15E-17	9.51E-17	1.9E-14	0.48%



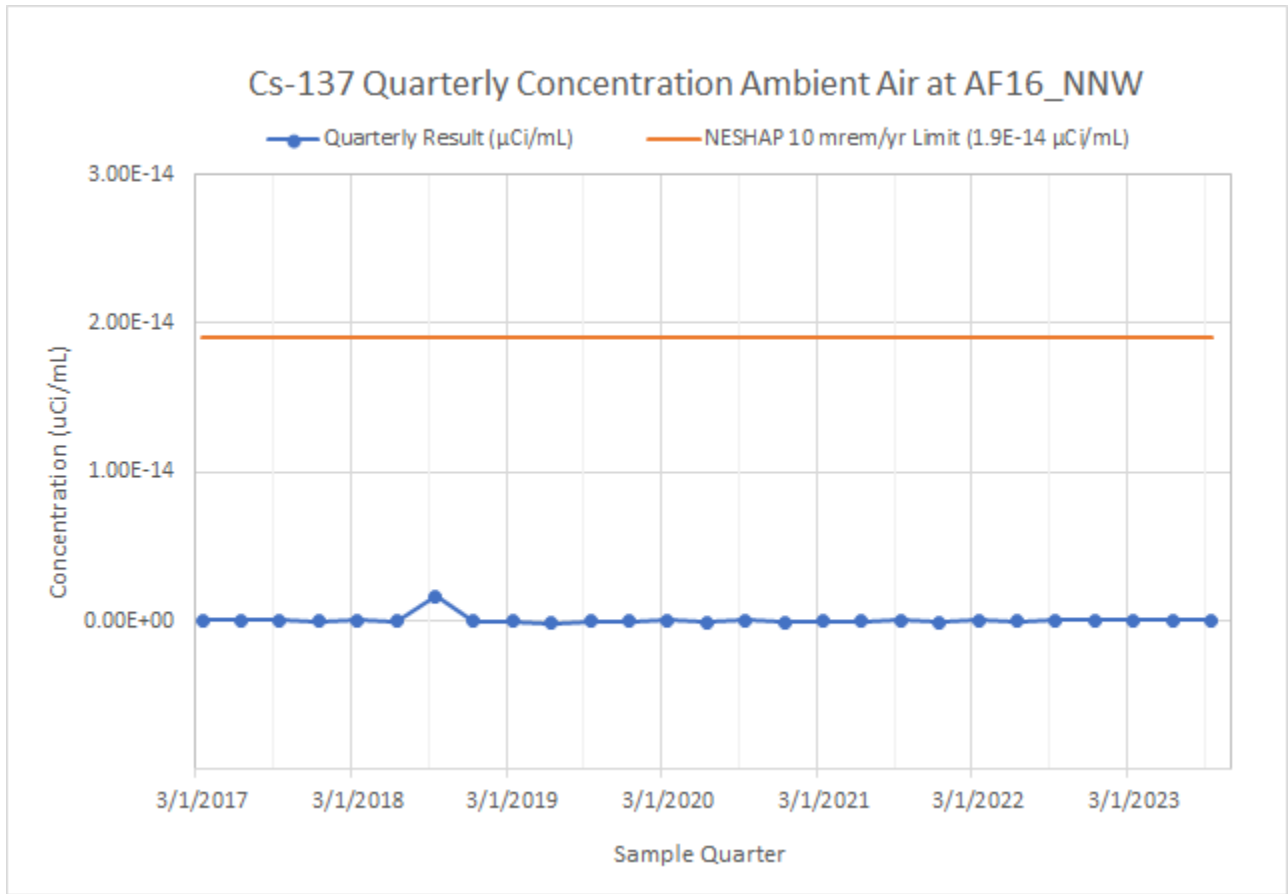
2. Iodine-129 (I-129)

Location	Sample ID	Sample Date	Quarterly Result (μCi/mL)	Quarterly Uncertainty (μCi/mL)	NESHAP 10 mrem/yr Limit (9.1E-15 μCi/mL)	Concentration (%) of NESHAP Limit
AF16_NNW	2017-00125	3/28/2017	4.70E-17	9.52E-17	9.1E-15	0.52%
AF16_NNW	2017-02597	6/20/2017	2.66E-18	9.94E-17	9.1E-15	0.03%
AF16_NNW	2017-04074	9/26/2017	9.93E-18	5.29E-17	9.1E-15	0.11%
AF16_NNW	2017-05992	12/19/2017	1.61E-17	7.40E-17	9.1E-15	0.18%
AF16_NNW	2018-00075	3/27/2018	1.28E-17	4.65E-17	9.1E-15	0.14%
AF16_NNW	2018-02591	6/19/2018	-5.32E-17	5.85E-17	9.1E-15	-0.58%
AF16_NNW	2018-03821	9/25/2018	6.12E-18	5.73E-17	9.1E-15	0.07%
AF16_NNW	2018-05930	12/18/2018	-1.62E-17	4.92E-17	9.1E-15	-0.18%
AF16_NNW	2019-00118	3/26/2019	2.50E-17	4.58E-17	9.1E-15	0.27%
AF16_NNW	2019-02458	6/18/2019	-1.21E-17	2.75E-17	9.1E-15	-0.13%
AF16_NNW	2019-04141	9/24/2019	1.23E-17	4.99E-17	9.1E-15	0.13%
AF16_NNW	2019-06029	12/17/2019	3.04E-17	5.43E-17	9.1E-15	0.33%
AF16_NNW	2020-00572	3/24/2020	-2.07E-17	4.17E-17	9.1E-15	-0.23%
AF16_NNW	2020-02347	6/16/2020	-2.63E-17	7.44E-17	9.1E-15	-0.29%
AF16_NNW	2020-04109	9/22/2020	-1.02E-17	5.80E-17	9.1E-15	-0.11%
AF16_NNW	2020-05758	12/15/2020	4.11E-18	8.97E-17	9.1E-15	0.05%
AF16_NNW	2021-00163	3/23/2021	-1.47E-17	7.06E-17	9.1E-15	-0.16%
AF16_NNW	2021-02606	6/15/2021	-1.05E-17	5.98E-17	9.1E-15	-0.12%
AF16_NNW	2021-04345	9/21/2021	1.94E-17	8.63E-17	9.1E-15	0.21%
AF16_NNW	2021-06770	12/28/2021	-6.59E-18	2.76E-17	9.1E-15	-0.07%
AF16_NNW	2022-00044	3/22/2022	1.47E-17	4.40E-17	9.1E-15	0.16%
AF16_NNW	2022-02606	6/28/2022	2.26E-17	4.29E-17	9.1E-15	0.25%
AF16_NNW	2022-05037	9/20/2022	5.10E-17	6.99E-17	9.1E-15	0.56%
AF16_NNW	2022-06921	12/27/2022	-6.09E-17	8.90E-17	9.1E-15	-0.67%
AF16_NNW	2023-00065	3/21/2023	1.61E-18	7.99E-17	9.1E-15	0.02%
AF16_NNW	2023-02579	6/27/2023	-1.00E-17	6.03E-17	9.1E-15	-0.11%
AF16_NNW	2023-04905	9/19/2023	9.51E-17	1.14E-16	9.1E-15	1.04%



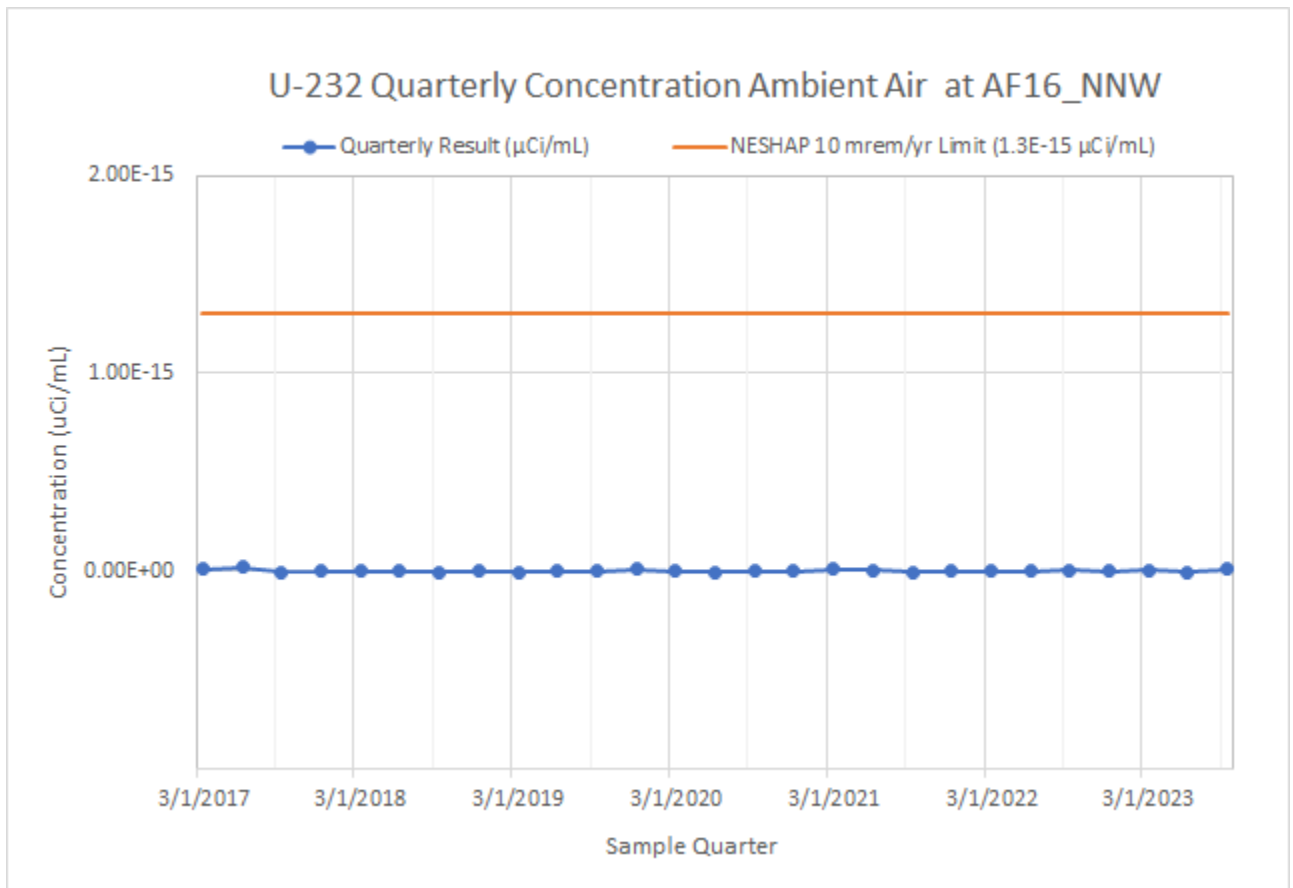
3. Cesium-137 (Cs-137)

Location	Sample ID	Sample Date	Quarterly Result (μCi/mL)	Quarterly Uncertainty (μCi/mL)	NESHAP 10 mrem/yr Limit (1.9E-14 μCi/mL)	Concentration (%) of NESHAP Limit
AF16_NNW	2017-00125	3/28/2017	5.63E-17	8.22E-17	1.9E-14	0.30%
AF16_NNW	2017-02597	6/20/2017	2.00E-17	9.15E-17	1.9E-14	0.11%
AF16_NNW	2017-04074	9/26/2017	3.35E-17	8.24E-17	1.9E-14	0.18%
AF16_NNW	2017-05992	12/19/2017	8.33E-18	7.34E-17	1.9E-14	0.04%
AF16_NNW	2018-00075	3/27/2018	4.93E-17	7.08E-17	1.9E-14	0.26%
AF16_NNW	2018-02591	6/19/2018	-1.01E-17	5.10E-17	1.9E-14	-0.05%
AF16_NNW	2018-03821	9/25/2018	1.66E-15	1.54E-16	1.9E-14	8.73%
AF16_NNW	2018-05930	12/18/2018	-2.49E-17	8.64E-17	1.9E-14	-0.13%
AF16_NNW	2019-00118	3/26/2019	-2.69E-17	9.55E-17	1.9E-14	-0.14%
AF16_NNW	2019-02458	6/18/2019	-1.50E-16	1.24E-16	1.9E-14	-0.79%
AF16_NNW	2019-04141	9/24/2019	-1.58E-19	9.02E-17	1.9E-14	0.00%
AF16_NNW	2019-06029	12/17/2019	-2.89E-17	1.07E-16	1.9E-14	-0.15%
AF16_NNW	2020-00572	3/24/2020	3.53E-17	5.74E-17	1.9E-14	0.19%
AF16_NNW	2020-02347	6/16/2020	-9.50E-17	1.27E-16	1.9E-14	-0.50%
AF16_NNW	2020-04109	9/22/2020	6.71E-17	8.71E-17	1.9E-14	0.35%
AF16_NNW	2020-05758	12/15/2020	-1.02E-16	1.04E-16	1.9E-14	-0.54%
AF16_NNW	2021-00163	3/23/2021	-1.17E-17	8.14E-17	1.9E-14	-0.06%
AF16_NNW	2021-02606	6/15/2021	-4.87E-17	1.08E-16	1.9E-14	-0.26%
AF16_NNW	2021-04345	9/21/2021	6.31E-17	6.86E-17	1.9E-14	0.33%
AF16_NNW	2021-06770	12/28/2021	-7.15E-17	9.15E-17	1.9E-14	-0.38%
AF16_NNW	2022-00044	3/22/2022	1.65E-17	1.02E-16	1.9E-14	0.09%
AF16_NNW	2022-02606	6/28/2022	7.76E-18	5.97E-17	1.9E-14	0.04%
AF16_NNW	2022-05037	9/20/2022	7.32E-17	9.11E-17	1.9E-14	0.39%
AF16_NNW	2022-06921	12/27/2022	3.70E-17	5.63E-17	1.9E-14	0.19%
AF16_NNW	2023-00065	3/21/2023	2.09E-17	1.08E-16	1.9E-14	0.11%
AF16_NNW	2023-02579	6/27/2023	5.08E-17	8.27E-17	1.9E-14	0.27%
AF16_NNW	2023-04905	9/19/2023	2.49E-17	8.74E-17	1.9E-14	0.13%



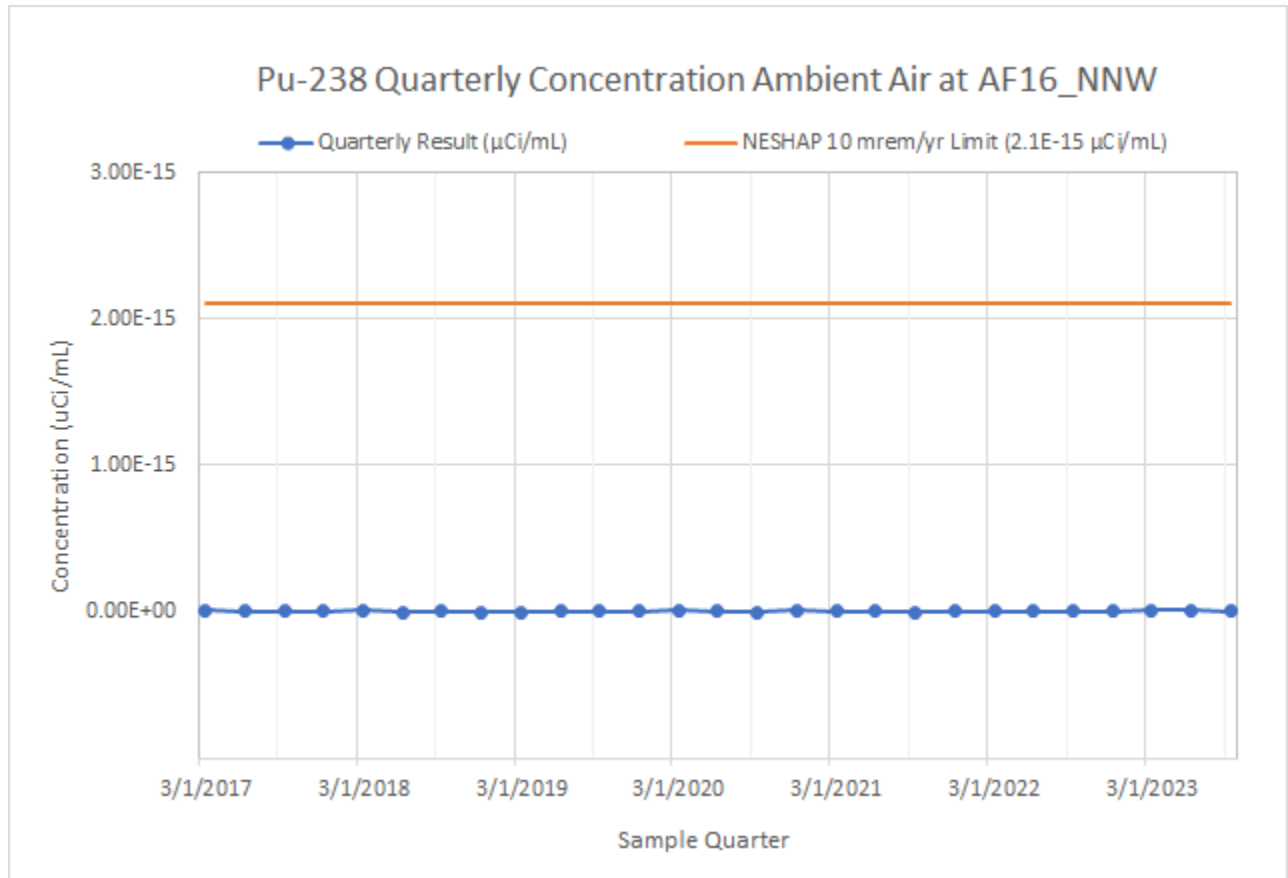
4. Uranium-232 (U-232)

Location	Sample ID	Sample Date	Quarterly Result ($\mu\text{Ci}/\text{mL}$)	Quarterly Uncertainty ($\mu\text{Ci}/\text{mL}$)	NESHAP 10 mrem/yr Limit ($1.3\text{E}-15 \mu\text{Ci}/\text{mL}$)	Concentration (%) of NESHAP Limit
AF16_NNW	2017-00125	3/28/2017	8.09E-18	1.31E-17	1.3E-15	0.62%
AF16_NNW	2017-02597	6/20/2017	1.70E-17	1.53E-17	1.3E-15	1.30%
AF16_NNW	2017-04074	9/26/2017	-6.48E-18	9.84E-18	1.3E-15	-0.50%
AF16_NNW	2017-05992	12/19/2017	-7.39E-19	6.65E-18	1.3E-15	-0.06%
AF16_NNW	2018-00075	3/27/2018	-9.52E-19	8.94E-18	1.3E-15	-0.07%
AF16_NNW	2018-02591	6/19/2018	-3.40E-18	9.68E-18	1.3E-15	-0.26%
AF16_NNW	2018-03821	9/25/2018	-8.57E-18	9.40E-18	1.3E-15	-0.66%
AF16_NNW	2018-05930	12/18/2018	-2.33E-18	1.13E-17	1.3E-15	-0.18%
AF16_NNW	2019-00118	3/26/2019	-5.76E-18	9.79E-18	1.3E-15	-0.44%
AF16_NNW	2019-02458	6/18/2019	3.39E-24	1.32E-17	1.3E-15	0.00%
AF16_NNW	2019-04141	9/24/2019	-1.12E-18	1.01E-17	1.3E-15	-0.09%
AF16_NNW	2019-06029	12/17/2019	6.04E-18	9.40E-18	1.3E-15	0.46%
AF16_NNW	2020-00572	3/24/2020	-3.93E-18	9.45E-18	1.3E-15	-0.30%
AF16_NNW	2020-02347	6/16/2020	-6.10E-18	8.63E-18	1.3E-15	-0.47%
AF16_NNW	2020-04109	9/22/2020	0.00E+00	7.94E-18	1.3E-15	0.00%
AF16_NNW	2020-05758	12/15/2020	-2.83E-18	1.11E-17	1.3E-15	-0.22%
AF16_NNW	2021-00163	3/23/2021	8.06E-18	9.82E-18	1.3E-15	0.62%
AF16_NNW	2021-02606	6/15/2021	1.37E-18	7.07E-18	1.3E-15	0.11%
AF16_NNW	2021-04345	9/21/2021	-8.49E-18	1.09E-17	1.3E-15	-0.65%
AF16_NNW	2021-06770	12/28/2021	-7.54E-19	3.61E-18	1.3E-15	-0.06%
AF16_NNW	2022-00044	3/22/2022	-1.47E-18	5.38E-18	1.3E-15	-0.11%
AF16_NNW	2022-02606	6/28/2022	-8.04E-19	5.68E-18	1.3E-15	-0.06%
AF16_NNW	2022-05037	9/20/2022	5.69E-18	1.11E-17	1.3E-15	0.44%
AF16_NNW	2022-06921	12/27/2022	-3.09E-18	3.96E-18	1.3E-15	-0.24%
AF16_NNW	2023-00065	3/21/2023	9.18E-19	3.12E-18	1.3E-15	0.07%
AF16_NNW	2023-02579	6/27/2023	-4.72E-18	6.14E-18	1.3E-15	-0.36%
AF16_NNW	2023-04905	9/19/2023	9.33E-18	1.30E-17	1.3E-15	0.72%



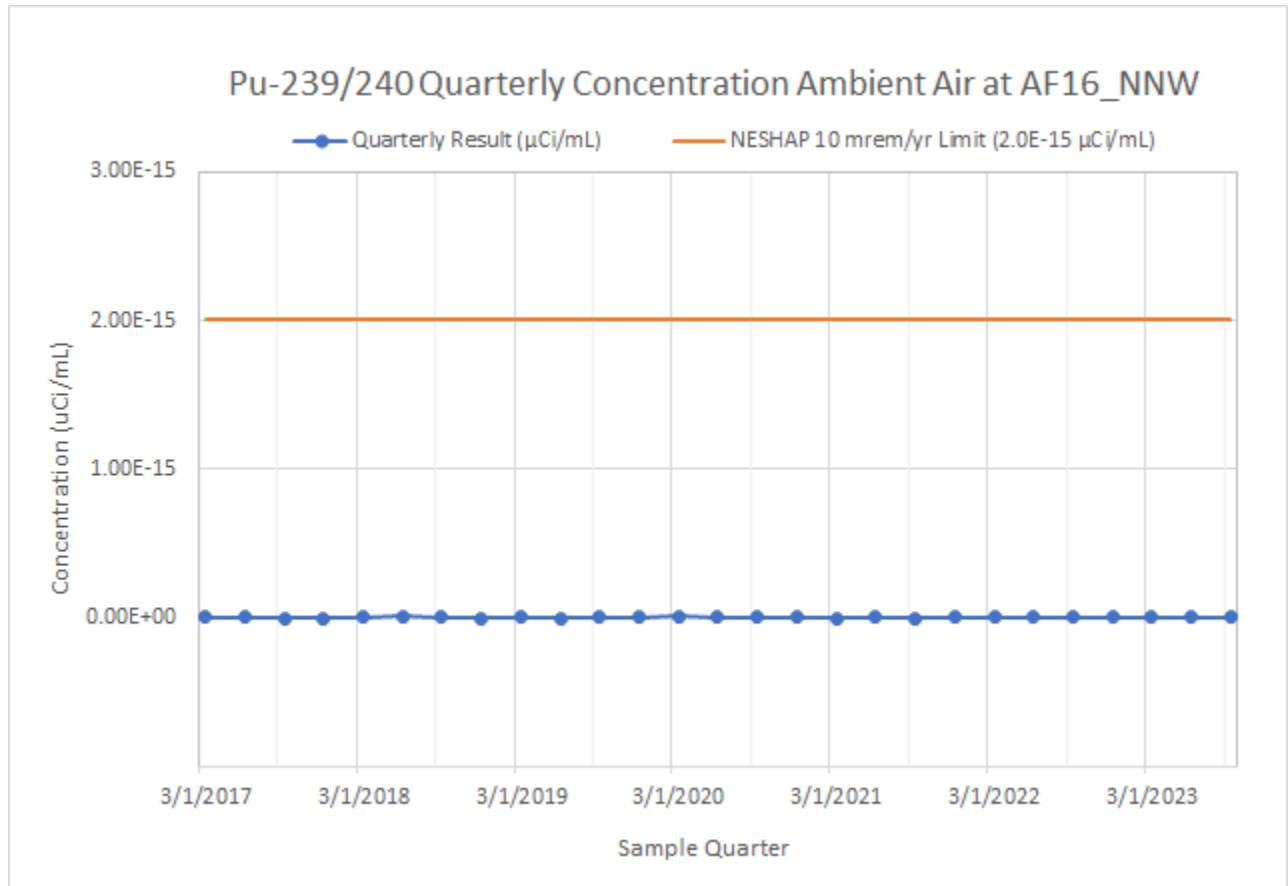
5. Plutonium-238 (Pu-238)

Location	Sample ID	Sample Date	Quarterly Result (μCi/mL)	Quarterly Uncertainty (μCi/mL)	NESHAP 10 mrem/yr Limit (2.1E-15 μCi/mL)	Concentration (%) of NESHAP Limit
AF16_NNW	2017-00125	3/28/2017	6.40E-18	7.52E-18	2.1E-15	0.30%
AF16_NNW	2017-02597	6/20/2017	0.00E+00	5.77E-18	2.1E-15	0.00%
AF16_NNW	2017-04074	9/26/2017	-1.20E-18	5.26E-18	2.1E-15	-0.06%
AF16_NNW	2017-05992	12/19/2017	1.20E-19	8.92E-18	2.1E-15	0.01%
AF16_NNW	2018-00075	3/27/2018	7.43E-18	1.08E-17	2.1E-15	0.35%
AF16_NNW	2018-02591	6/19/2018	-5.72E-18	1.02E-17	2.1E-15	-0.27%
AF16_NNW	2018-03821	9/25/2018	-9.33E-19	4.86E-18	2.1E-15	-0.04%
AF16_NNW	2018-05930	12/18/2018	-1.98E-18	1.03E-17	2.1E-15	-0.09%
AF16_NNW	2019-00118	3/26/2019	-2.04E-18	9.39E-18	2.1E-15	-0.10%
AF16_NNW	2019-02458	6/18/2019	5.13E-18	1.23E-17	2.1E-15	0.24%
AF16_NNW	2019-04141	9/24/2019	4.76E-18	6.98E-18	2.1E-15	0.23%
AF16_NNW	2019-06029	12/17/2019	1.88E-18	6.91E-18	2.1E-15	0.09%
AF16_NNW	2020-00572	3/24/2020	6.79E-18	8.28E-18	2.1E-15	0.32%
AF16_NNW	2020-02347	6/16/2020	1.89E-18	5.87E-18	2.1E-15	0.09%
AF16_NNW	2020-04109	9/22/2020	-4.50E-18	1.12E-17	2.1E-15	-0.21%
AF16_NNW	2020-05758	12/15/2020	6.14E-18	7.99E-18	2.1E-15	0.29%
AF16_NNW	2021-00163	3/23/2021	-5.47E-25	5.09E-18	2.1E-15	0.00%
AF16_NNW	2021-02606	6/15/2021	3.97E-18	6.15E-18	2.1E-15	0.19%
AF16_NNW	2021-04345	9/21/2021	-1.78E-18	6.05E-18	2.1E-15	-0.08%
AF16_NNW	2021-06770	12/28/2021	0.00E+00	4.40E-18	2.1E-15	0.00%
AF16_NNW	2022-00044	3/22/2022	-8.36E-19	4.33E-18	2.1E-15	-0.04%
AF16_NNW	2022-02606	6/28/2022	4.35E-18	6.86E-18	2.1E-15	0.21%
AF16_NNW	2022-05037	9/20/2022	4.39E-18	5.71E-18	2.1E-15	0.21%
AF16_NNW	2022-06921	12/27/2022	4.84E-18	5.49E-18	2.1E-15	0.23%
AF16_NNW	2023-00065	3/21/2023	8.16E-18	8.24E-18	2.1E-15	0.39%
AF16_NNW	2023-02579	6/27/2023	5.71E-18	7.34E-18	2.1E-15	0.27%
AF16_NNW	2023-04905	9/19/2023	3.43E-18	5.31E-18	2.1E-15	0.16%



6. Plutonium-239/240 (Pu-239/240)

Location	Sample ID	Sample Date	Quarterly Result (μCi/mL)	Quarterly Uncertainty (μCi/mL)	NESHAP 10 mrem/yr Limit (2.0E-15 μCi/mL)	Concentration (%) of NESHAP Limit
AF16_NNW	2017-00125	3/28/2017	1.28E-18	7.51E-18	2.0E-15	0.06%
AF16_NNW	2017-02597	6/20/2017	1.33E-18	9.98E-18	2.0E-15	0.07%
AF16_NNW	2017-04074	9/26/2017	-5.99E-18	7.04E-18	2.0E-15	-0.30%
AF16_NNW	2017-05992	12/19/2017	-2.77E-18	9.35E-18	2.0E-15	-0.14%
AF16_NNW	2018-00075	3/27/2018	1.23E-18	8.00E-18	2.0E-15	0.06%
AF16_NNW	2018-02591	6/19/2018	5.71E-18	1.12E-17	2.0E-15	0.29%
AF16_NNW	2018-03821	9/25/2018	1.87E-18	4.49E-18	2.0E-15	0.09%
AF16_NNW	2018-05930	12/18/2018	-6.93E-18	1.15E-17	2.0E-15	-0.35%
AF16_NNW	2019-00118	3/26/2019	3.48E-19	4.25E-18	2.0E-15	0.02%
AF16_NNW	2019-02458	6/18/2019	-2.56E-18	1.32E-17	2.0E-15	-0.13%
AF16_NNW	2019-04141	9/24/2019	1.85E-18	5.70E-18	2.0E-15	0.09%
AF16_NNW	2019-06029	12/17/2019	5.64E-18	5.83E-18	2.0E-15	0.28%
AF16_NNW	2020-00572	3/24/2020	9.01E-18	9.38E-18	2.0E-15	0.45%
AF16_NNW	2020-02347	6/16/2020	9.50E-19	6.15E-18	2.0E-15	0.05%
AF16_NNW	2020-04109	9/22/2020	5.61E-18	8.55E-18	2.0E-15	0.28%
AF16_NNW	2020-05758	12/15/2020	3.68E-18	6.36E-18	2.0E-15	0.18%
AF16_NNW	2021-00163	3/23/2021	-4.10E-18	6.62E-18	2.0E-15	-0.20%
AF16_NNW	2021-02606	6/15/2021	3.96E-18	5.49E-18	2.0E-15	0.20%
AF16_NNW	2021-04345	9/21/2021	-4.45E-18	6.74E-18	2.0E-15	-0.22%
AF16_NNW	2021-06770	12/28/2021	1.42E-18	5.89E-18	2.0E-15	0.07%
AF16_NNW	2022-00044	3/22/2022	8.36E-19	7.12E-18	2.0E-15	0.04%
AF16_NNW	2022-02606	6/28/2022	3.74E-18	8.60E-18	2.0E-15	0.19%
AF16_NNW	2022-05037	9/20/2022	1.75E-18	5.96E-18	2.0E-15	0.09%
AF16_NNW	2022-06921	12/27/2022	2.42E-18	7.62E-18	2.0E-15	0.12%
AF16_NNW	2023-00065	3/21/2023	4.66E-18	7.22E-18	2.0E-15	0.23%
AF16_NNW	2023-02579	6/27/2023	3.68E-18	7.16E-18	2.0E-15	0.18%
AF16_NNW	2023-04905	9/19/2023	2.57E-18	5.04E-18	2.0E-15	0.13%



7. Americium-241 (Am-241)

Location	Sample ID	Sample Date	Quarterly Result (μCi/mL)	Quarterly Uncertainty (μCi/mL)	NESHAP 10 mrem/yr Limit (1.9E-15 μCi/mL)	Concentration (%) of NESHAP Limit
AF16_NNW	2017-00125	3/28/2017	1.59E-18	6.96E-18	1.90E-15	0.08%
AF16_NNW	2017-02597	6/20/2017	2.05E-18	6.09E-18	1.90E-15	0.11%
AF16_NNW	2017-04074	9/26/2017	-2.14E-18	5.51E-18	1.90E-15	-0.11%
AF16_NNW	2017-05992	12/19/2017	0.00E+00	4.69E-18	1.90E-15	0.00%
AF16_NNW	2018-00075	3/27/2018	6.91E-19	4.33E-18	1.90E-15	0.04%
AF16_NNW	2018-02591	6/19/2018	-7.10E-19	6.19E-18	1.90E-15	-0.04%
AF16_NNW	2018-03821	9/25/2018	-1.69E-18	6.63E-18	1.90E-15	-0.09%
AF16_NNW	2018-05930	12/18/2018	2.54E-18	6.90E-18	1.90E-15	0.13%
AF16_NNW	2019-00118	3/26/2019	1.89E-17	1.54E-17	1.90E-15	1.00%
AF16_NNW	2019-02458	6/18/2019	2.46E-24	1.29E-17	1.90E-15	0.00%
AF16_NNW	2019-04141	9/24/2019	1.29E-17	1.11E-17	1.90E-15	0.68%
AF16_NNW	2019-06029	12/17/2019	-1.05E-18	5.44E-18	1.90E-15	-0.06%
AF16_NNW	2020-00572	3/24/2020	2.26E-18	7.69E-18	1.90E-15	0.12%
AF16_NNW	2020-02347	6/16/2020	4.47E-25	4.95E-18	1.90E-15	0.00%
AF16_NNW	2020-04109	9/22/2020	1.67E-18	4.73E-18	1.90E-15	0.09%
AF16_NNW	2020-05758	12/15/2020	4.19E-18	5.81E-18	1.90E-15	0.22%
AF16_NNW	2021-00163	3/23/2021	-2.05E-18	6.95E-18	1.90E-15	-0.11%
AF16_NNW	2021-02606	6/15/2021	1.64E-18	8.48E-18	1.90E-15	0.09%
AF16_NNW	2021-04345	9/21/2021	1.31E-18	9.29E-18	1.90E-15	0.07%
AF16_NNW	2021-06770	12/28/2021	1.72E-18	4.13E-18	1.90E-15	0.09%
AF16_NNW	2022-00044	3/22/2022	4.60E-19	5.61E-18	1.90E-15	0.02%
AF16_NNW	2022-02606	6/28/2022	1.25E-18	8.11E-18	1.90E-15	0.07%
AF16_NNW	2022-05037	9/20/2022	9.55E-18	9.90E-18	1.90E-15	0.50%
AF16_NNW	2022-06921	12/27/2022	1.49E-17	6.64E-18	1.90E-15	0.79%
AF16_NNW	2023-00065	3/21/2023	6.12E-18	8.49E-18	1.90E-15	0.32%
AF16_NNW	2023-02579	6/27/2023	2.23E-17	6.67E-18	1.90E-15	1.17%
AF16_NNW	2023-04905	9/19/2023	1.00E-17	1.07E-17	1.9E-15	0.53%

