

## Main Plant Process Building (MPPB) Demolition

### ► [RETURN TO HOME](#)

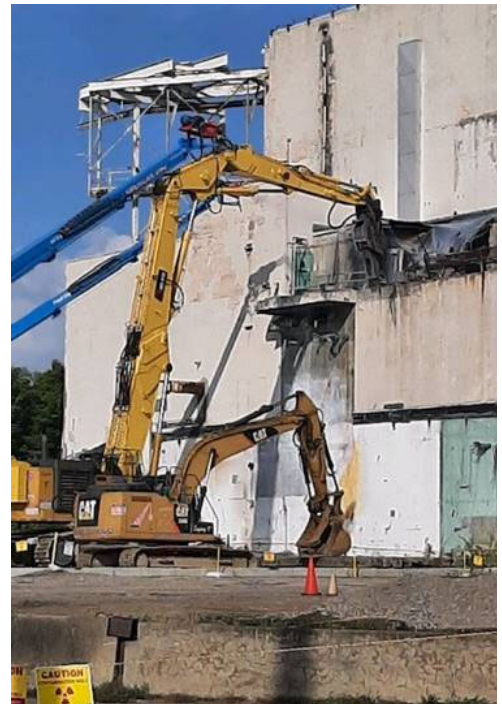
Facility deactivation and demolition is a major CHBWV objective under the current contract. The MPPB is a 5-story, 1960s-era concrete structure built to reprocess spent (irradiated) nuclear fuel. Much of the equipment, piping and asbestos has been removed from the facility in preparation for demolition. Additional areas are being targeted to further reduce radiological and hazardous materials prior to demolition.

### **Main Plant Process Building Demolition**

- [MPPB Presentation](#)
- [Quick Facts](#)
- [Main Plant Demolition 2021 Video](#)
- [Environmental Monitoring Video](#)

### **Main Plant Progress Update**

- [Upper Warm Aisle & Equipment Removal \(Week of Oct. 17, 2022\)](#)
- [Upper Warm Aisle \(Week of Oct. 10, 2022\)](#)
- [Start of Deconstruction and SST \(Week of Oct. 1, 2022\)](#)



*Main Plant Process Building September*

00288